

High Performance Football Centre Algarve



7 Our Goals

9 The Project

19 Accommodation - thinking of each athlete, each team

5 Match Algarve - High Performance Football Centre of Algarve

13 Sports Facilities for Athletes and Teams

20 Unmatched Location - The Algarve

This resort was developed by portuguese/dutch developers who acquired a 610 hectare plot in 1998.

- Carvoeiro branco
- Imca group bv
- Pluis participaties bv



Match Algarve

*High Performance Sports
Centre of Algarve*

In Portugal, as in the entire world, Football is, doubtlessly, a sport in constant development, with a long, and many times glorious, tradition in national teams and clubs.

Match Algarve - High Performance Football Centre is a sports centre of excellence, geared primarily at training, educating and recovering athletes from the football area, but also for athletes of other sports, professional or non-professional, such as footgolf, rugby, cycling, tennis, athletics, and even water sports like rowing, which can be practiced in the Barragem da Bravura [Bravura Dam], very close to our complex.



MatchAlgarve

Football Resort & Sports Academy





Match Algarve will be, throughout The entire year, the place to be for Families and groups wishing to Experience the ultimate football Experience.

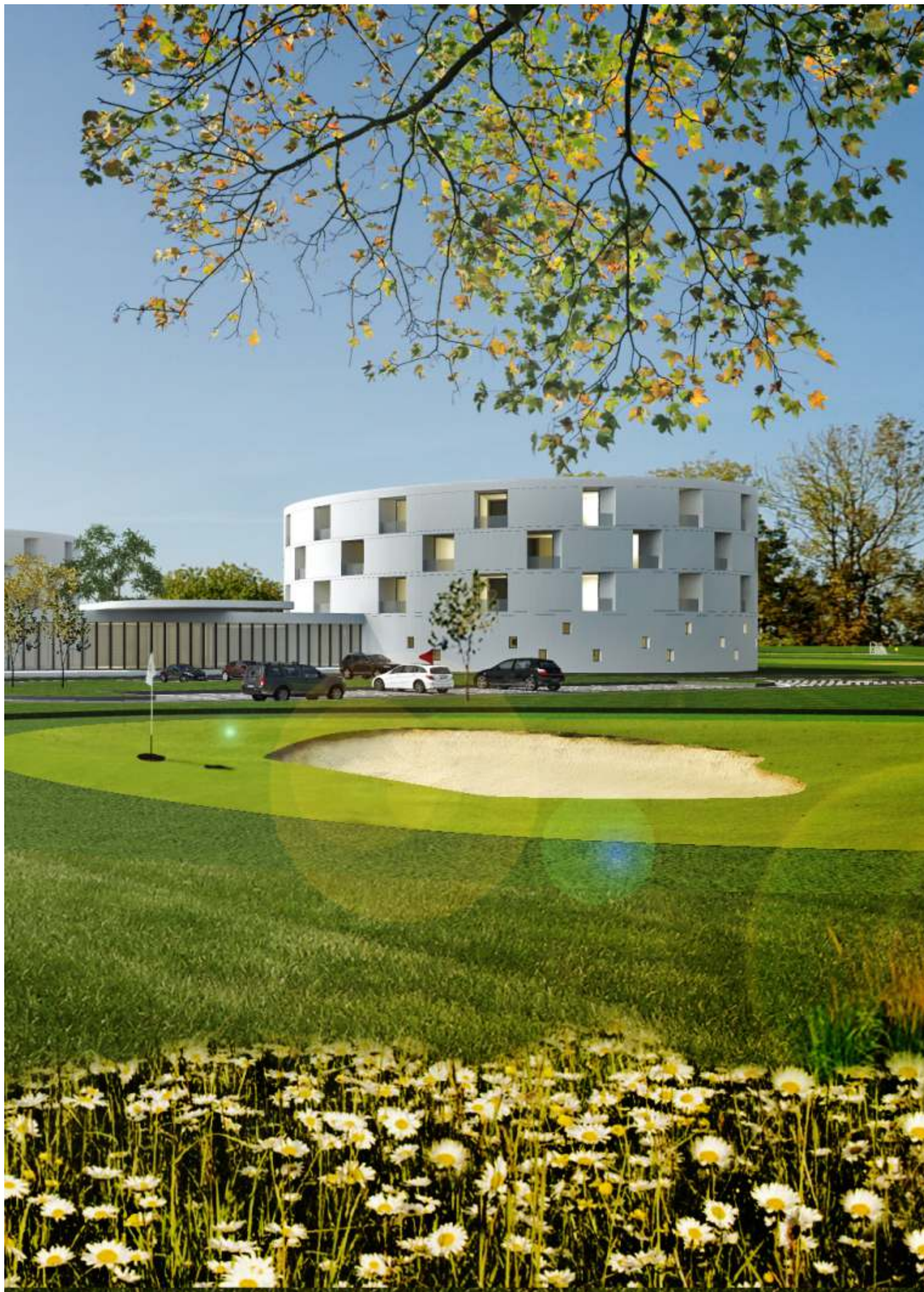
Our Goals

The primary goal of Match Algarve is to provide a high performance sports centre for people connected to professional sports, but also for athletes that wish to research, train and compete within a stimulating environment, with unique conditions and a climate that can help them attain their sports goals. an help them attain their sports goals.

Ultimately, Match Algarve intends to respond to the growing need of educational, professional and non-professional sport practice in constant growth at different levels.

Match Algarve was designed and is fully prepared to provide national and international clubs with a series of infrastructures with cutting edge equipment and a highly experienced team that will provide the best monitoring for the preparation of athletes and teams of a wide variety of sports.



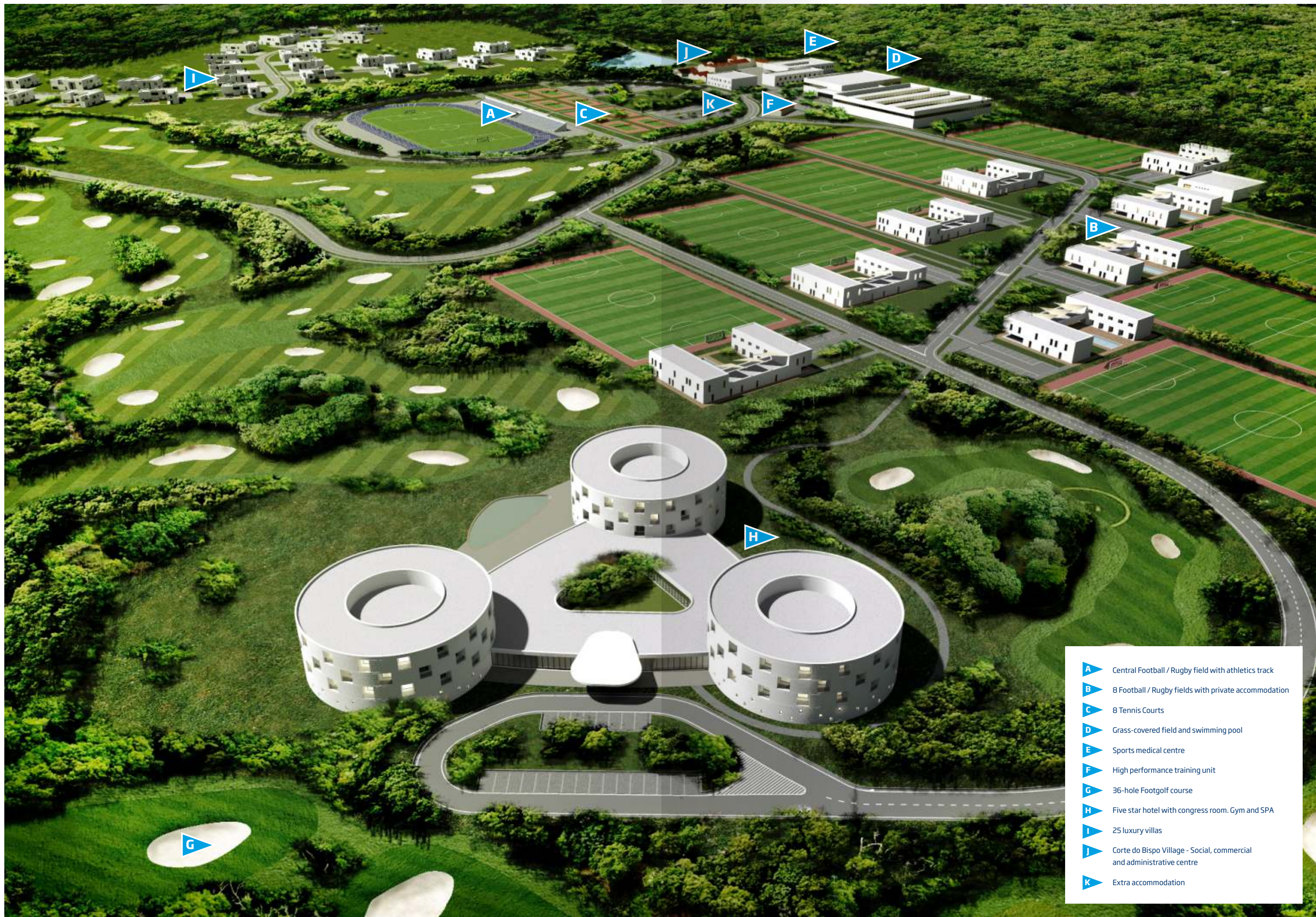


The Project

Located in the centre of a 610ha farm, it is an interesting architectural complex surrounded by football fields, sports infrastructure, a hotel and a range of accommodation facilities that combines modernity and tradition in a unique mixture between past, present, and future.

The village of Corte do Bispo is the result of the recovery works in the buildings that use to constitute the manor house of the agriculture property, which will be the social, commercial and administrative centre of the complex. Shops, restaurants, coffee shops, projection rooms and others, turn this group of buildings with relevant architectonic value into the heart of Match Algarve.





- A** Central Football / Rugby field with athletics track
- B** 8 Football / Rugby fields with private accommodation
- C** 8 Tennis Courts
- D** Grass-covered field and swimming pool
- E** Sports medical centre
- F** High performance training unit
- G** 36-hole Footgolf course
- H** Five star hotel with congress room. Gym and SPA
- I** 25 luxury villas
- J** Corte do Bispo Village - Social, commercial and administrative centre
- K** Extra accommodation



Sports Facilities for Athletes and Teams

- Central Football / Rugby field with athletics track
- 8 Football / Rugby fields with private accommodation
- 8 Tennis Courts
- Grass-covered field and swimming pool
- Sports medical centre
- High performance training unit
- 36-hole Footgolf course





Central Football / Rugby field with athletics track

Match Algarve features a grass field fit to host tournaments, with athletics tracks, private locker rooms and a small stand with capacity for 2.000 people.

8 Football / Rugby fields with private accommodation

Teams may rent each field with total privacy, next to a private accommodation unit with capacity to welcome teams and all their staff, together with conference rooms and lounges. These private accommodation units may be separated from each other, and from other clubs, media and visitors. Each accommodation unit features 20 suites, adding up to 160.

8 Tennis Courts

8 Tennis courts with different types of flooring.



Unique in the world is its 36-hole footgolf course. Is the largest of its kind in the word and will certainly be a huge attraction for football fans. Skills and tactics may be practiced by everyone.

36 hole Footgolf course

A fast growing and recently developed leisure sport activity which combines the fundamentals of golfing with the technical abilities of football. The field resembles that of a golf course and shall occupy 25000m2. This shall be the first Footgolf course in the world which has not been adapted from a golf course or other.

Physical maintenance circuits

Using the already existing rural paths, there will be physical training circuits, off-road and BTT.



Grass-covered field and swimming pool

This equipment with a ludic nature, for physical preparation and recovery for teams and athletes.



Sports medical centre and high performance training unit

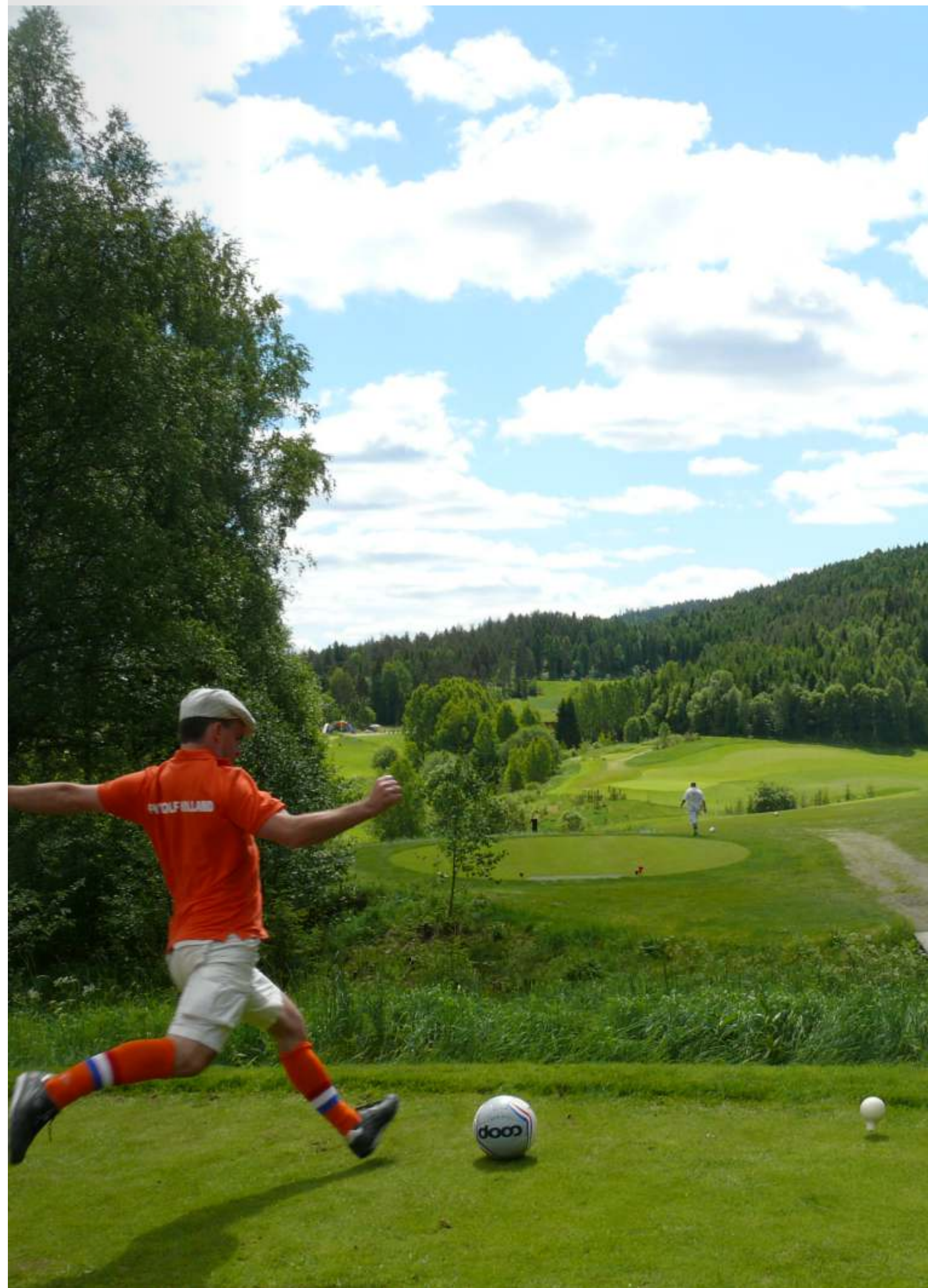
Bearing in mind the needs of high competition athletes, Match Algarve features a high quality Sports medical centre and a High performance training unit, designed for medical/sports research and development, diagnosis and recovery of athletes, thus being equipped with the required diagnosis, therapy and research means, for the training and physical and mental development of athletes and coaches.

Extra accommodation

This 30-room accommodation will provide support to the sports medical centre and high performance unit, but also offer accommodation to non-professional and young athletes and employees of the centre.

Gym and SPA

The Hotel features a high quality fully equipped Gym for the training and evolution of athletes, supplemented by and extra quality SPA for athletes to relax and recover.



Accommodation thinking of each athlete, each team.



***This high quality
Hotel resembles a
Museum of Sports
with 120 suites.***

Professional sports, mainly football, move personalities, managers, technical staff and athletes and, sometimes, even their families, seeking private accommodation, with complete autonomy and privacy.

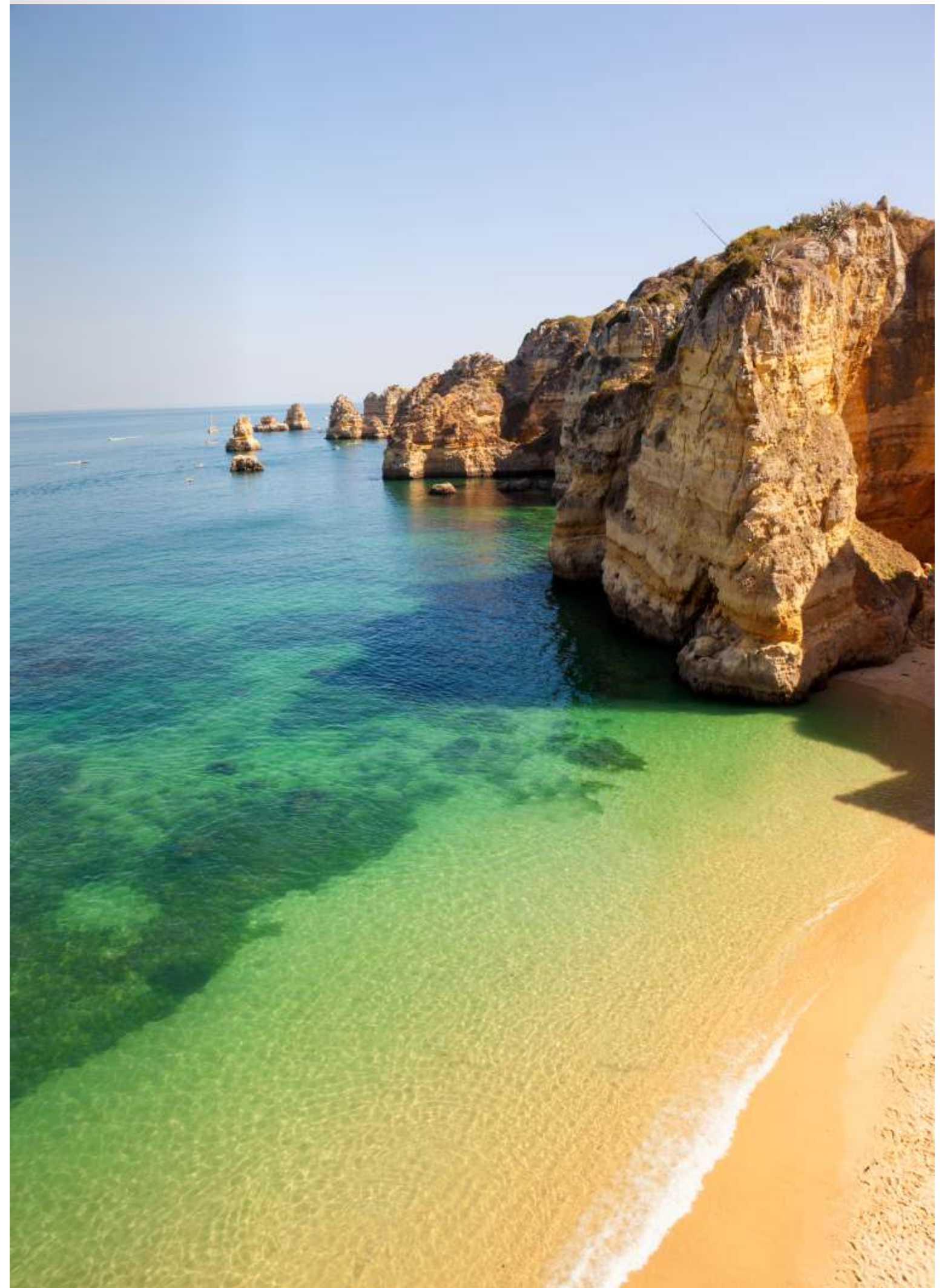
Five star hotel

The five star hotel intends to accommodate teams or individual athletes, journalists and technical staff. They shall find all the required commodities, such as a commercial area, restaurants and a fully equipped congress centre. Since Match Algarve is mainly focused on sports, and particularly football, this Hotel is a Museum of Sports. The bedrooms, lounges and other spaces all have names of consecrated athletes and guests will find articles and equipment allusive to charismatic competitions and athletes.

25 luxury villas

This is the reason why there is a need to promote high standard housing units, in order to meet the most demanding requirements, thus encouraging athletes and their teams to come to Match Algarve.

In the area to the south of the development, there are twenty five private housing units, with high level of quality and comfort that provide the privacy required by the athletes and clubs. These housing units were designed to integrate and frame naturally within the hills, seeking the best possible involvement with the surrounding landscape.





Location **The Algarve**

The privileged location of Match Algarve offers everyone an ideal opportunity to increase their training periods.

Match Algarve rises in the transition area between the coast of the Algarve and the mountains, strategically implanted within a harmonious ensemble of valleys and hills, making it a rare example that combines forest, pinewoods, vineyard and seven large dams.

Deployed in the Herdade da Corte do Bispo, you will find yourself only 40 minutes away from the Faro International Airport, 10 minutes from the International Racetrack airfield (Autódromo Internacional de Portimão) and 15 minutes from the city of Lagos, with its fabulous beaches and great touristic and leisure offer.

The privileged location of this development offers Teams an ideal opportunity to increase their training periods, both by its unmatched location and the typical Mediterranean climate, with warm and dry summers and mild winters with many sunny days and little rainfall.



**A world of
unique
experiences
for any visitor.**



A world of experiences

Lifestyle

From its fabulous gastronomy, with fresh fish and shellfish, to the almond- and fig-based sweets, wines and liquors, temptation teases the taste of those who visit the Algarve.

Teams and Athletes have at their disposal a large option of entertainment and leisure activities that they may enjoy in their free time. Lagos, the closest city to Match Algarve, faces the sea, with its prestigious and award-winning Marina de Lagos, recently awarded with 5 stars.

The cities around the sports complex also offer a wide option of bars and quality restaurants, and also Casinos of excellence

(Casino da Praia da Rocha is 20 km away and Casino de Vilamoura is 40 km away) both with a glamorous atmosphere, that, besides the exciting gambling, also provide great musical and dance shows.

Sports and Competition

The Algarve is a region with excellent conditions for the practice of an enormous variety of sports, high level competition or merely leisure. As examples of such international events are:

- Portugal Rally (Rally de Portugal e Rally Casinos do Algarve)
- World Cup in Rhythmic Gymnastics
- Algarve Bike Challenge
- Portugal Grand Prix / Algarve Powerboat F1
- Mundialito Beach Football
- Med Cup Portugal Trophy
- Belmonte International Show Jumping Competition
- WSBK - World Superbike Championship
- And many more...





Nature and Tradition

The Algarve is, for sure, the "the best kept secret of Europe": the combination of its several aspects is unique and almost rare. Starting from the coastline and its golden cliffs, thin-sand beaches, and moving towards the interior of the Algarve through paths that provide lovely walks and bike rides, the opportunities to enjoy nature and the pure air offered by this location are several.

As a fine example, we have the beaches of D. Ana and Praia do Alemão, considered two of the most beautiful beaches in the world and the Via Algarviana, which is a large pedestrian route that connects Alcoutim to Cabo de S. Vicente, with an extension of 300 km mostly located within the mountain range of the Algarve, where "bird watching" has been growing.

But the Algarve does not only boast its natural beauty: teams and athletes can also visit museums and observe castles or the Arab and Roman ruins scattered across the entire Algarve region.

The kartódromo and Autódromo Internacional do Algarve are only 10 minutes away from Match Algarve and, throughout the year, these are the set of high speed international competitions, filled with adrenalin and emotion! Besides the sport events, this infrastructure can provide relaxing and fun moments for the athletes staying at Match Algarve. They may enjoy several "racing experiences" on motorbikes, cars and Karts. Golf is another greatly enjoyed sport in the Algarve. Internationally recognized and praised, this region is also called "the golf paradise". There are over 80 courses, of which approximately 10 are not more than 15 km away from Match Algarve.



MatchAlgarve
Football Resort & Sports Academy