



OLIVE HOMES.COM
PORTUGAL PROPERTY

Off Plan Investments Part 1

Following our introduction to Off Plan investing we give below some excellent options.

If you missed the last newsletter then you can recap by following this link:

[Off Plan Investments - The advantages and disadvantages](#)



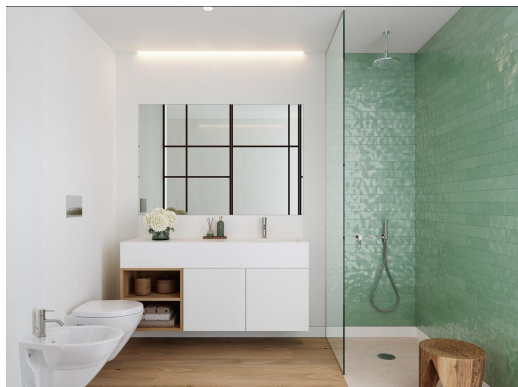
This new development is being built in award-winning Vilamoura, close to the golf courses and just a short drive to the marina and beaches. Alternatively, the Uber service in Portugal is one of the best in Europe and it would cost just 8 euros to the heart of Vilamoura. Being built by one of the leading developers in Vilamoura, this development of 87 apartments includes two, three and four bedroom apartments. The ground floor apartments have large patios or gardens with direct access to the pool area. The penthouse apartments have generous balconies and terraces with the more luxurious apartments having their own plunge pool. One of the unique features of this development is the sandy beach incorporated in the gardens, allowing you to visit the beach without leaving the condominium!

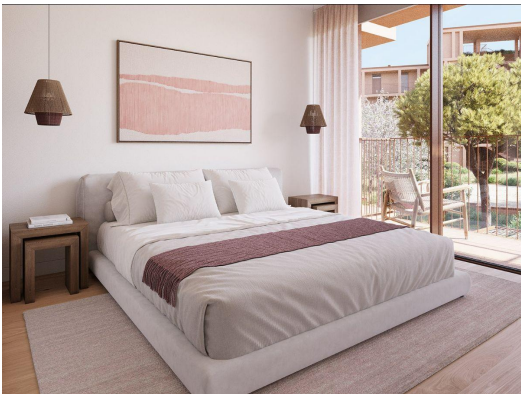
Construction has just commenced and should be finished in the first quarter of 2027.

OH2797 Two bedroom from €455,000



 2  2  Yes  92m²  Yes





OH2798 Three bedroom from €650,000



 **3**  **3**  **Yes**  **145m²**  **Yes**

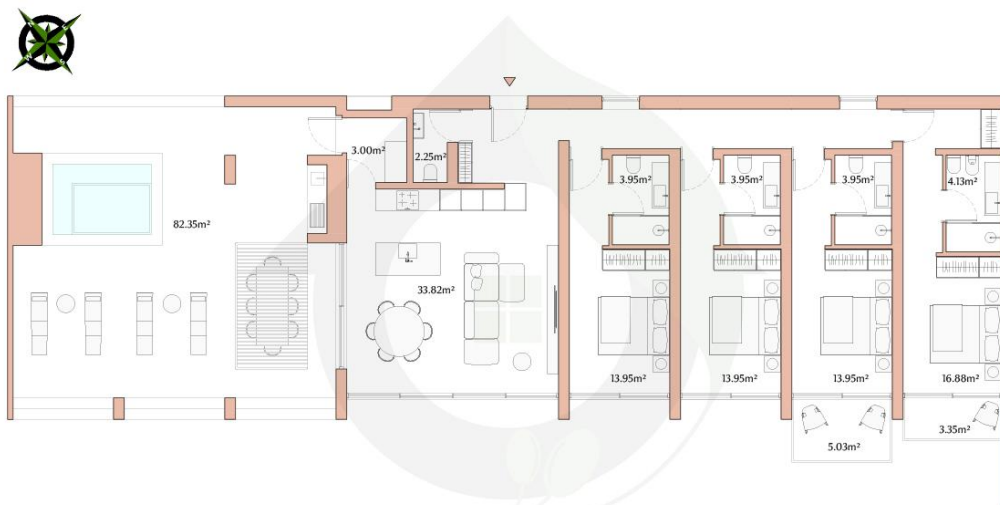




OH2799 Four bedroom from €925,000



 **4**  **4**  **Yes**  **240m²**  **Yes**



Please Note: While every attempt has been made to ensure the accuracy of the floor plan contained herein, measurements of doors, windows, rooms and any other items are approximate and no responsibility is taken for any error, omission, or misstatement. This plan is for illustrative purposes only and should only be used as such by any prospective purchaser.

Our personal favourite is a southwest facing four bedroom penthouse apartment costing €965,000 with an outside private terrace of 82m² featuring a plunge pool, barbecue and wonderful views over the condominium gardens. Four bedrooms - all ensuite - and a social bathroom. Three underground parking spaces and a private storage area. One of the advantages of off plan is the ability to cherry pick the best units - act now and you'll pick a stunner which will become much more desirable than other similarly priced units. This has both financial and non financial benefits.

Contact us now and we will show you how to achieve it.

Olive Homes ... Lifestyle and investment wrapped up in one!

Testimonial Of The Week



The best support and high level of professionalism.

Volodymyr - Vila Sol



Copyright © 2022 OliveHomes.com, All rights reserved.
You are receiving this email because you opted in via our website.

Our mailing address is:
OliveHomes.com
Urb. Al-Sakia, LHM10, Loja 12
Fonte Santa
Quarteira 8125-020
Portugal

[Add us to your address book](#)

Want to change how you receive these emails?
You can [update your preferences](#) or [unsubscribe from this list](#).