

65.23

terraco  
a=9.45m<sup>2</sup>

quarto  
a=13.40m<sup>2</sup>

quarto  
a=14.10m<sup>2</sup>

# FRAÇÃO H

65.25

Circulação  
a=6.10m<sup>2</sup>

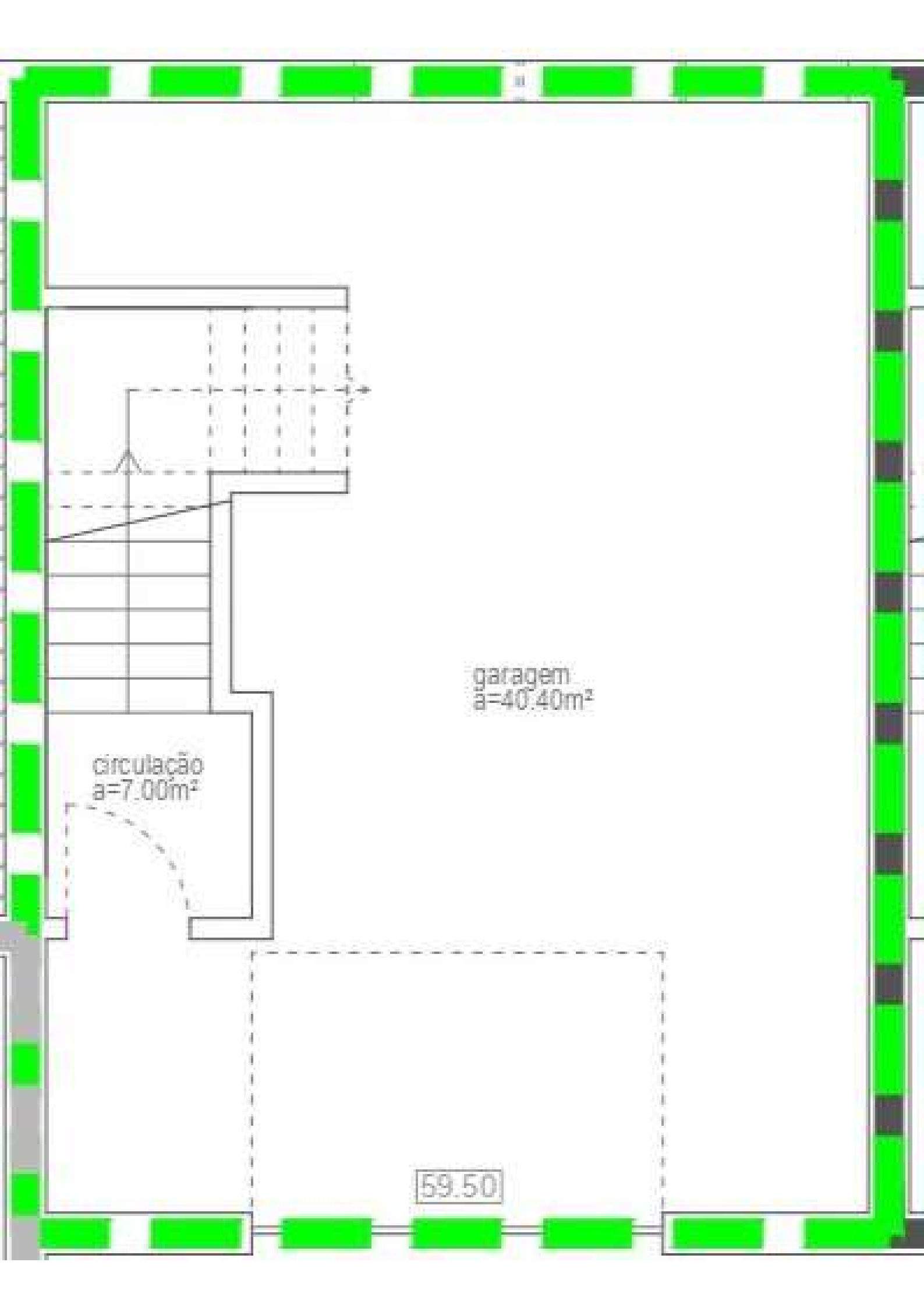
I.S.  
a=4.70m<sup>2</sup>

quarto  
a=12.44m<sup>2</sup>

Closet  
a=5.33m<sup>2</sup>

65.23

terraco  
a=12.45m<sup>2</sup>



garagem  
 $a=40.40m^2$

circulação  
 $a=7.00m^2$

59.50