



Ref: 10586

South Facing

3 Bedroom Detached Villa



São Bràs de Alportel

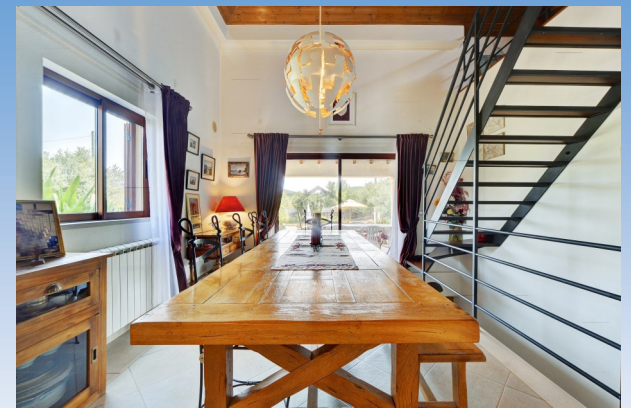
€845,000



AMI License: 12086

APEMIP

Partner: 5357



Well maintained and upgraded south facing villa with swimming pool located in a fully enclosed private plot, offering 3 quality bedrooms with en-suites, open plan lounge/dining room with vented ceiling, Mezzanine, modern fully fitted kitchen, utility room, basement and roof terrace. Located in a fully enclosed private plot with swimming pool .

Description of the Property

A very well constructed and maintained single story villa offering spacious accommodation, comprising of reception main door accessing the large light and airy lounge with separated dining area, feature open plan stair case leading to a mezzanine floor offering office space and library, fully fitted quality kitchen with integrated appliances and access to the utility room and covered terrace with BBQ. Master bedroom with walk in wardrobes/dressing area and en-suite bathroom with separate shower. Two additional double bedrooms with private en-suite wet rooms. The property also benefits from a garage and swimming pool.

The Property is laid out on one floor as follows:

Enter the property through the main door into the spacious lounge with log burner and feature wood panelled elevated roof, access to a feature steel open tread stair case leading to the first-floor mezzanine creating additional open space ideally for an office or library. The dining area is bright and spacious with patio doors overlooking the swimming pool and the garden. Excellent fully fitted kitchen with basement units with contrasting work tops with integrated 5 ring gas hob, fan assisted oven and extractor fan, dishwasher and American style fridge freezer. Access from the kitchen a good size utility room with installation for washing machine. Outside covered terrace with BBQ and outdoor dining area. An inner hallway leads from the lounge which give access to bedrooms, 2 double bedrooms with en-suite wet rooms, one bedroom having a patio door leading onto the garden and the other having windows with views over the garden, the master bedroom has patio doors accessing the garden and also with the benefit of a walk-in dressing room/wardrobes and en-suite bathroom with a jacuzzi corner bath and separate walk-in shower.

Outside:

The property is accessed via a single tract tarmac road, with electric gates accessing the property with Calçada natural stone drive way and leading to the garage. The property is fully fenced and walled and is very private with mature shrubs and trees and mainly laid to natural grass allowing easy to maintain gardens. The swimming pool is in a great south facing location allowing maximum sunshine through out the year.



Property Particulars

- Property Type: Villa
- Bedrooms: 3
- Bathrooms: 3
- Plot Size: 1100 m2
- Build Size: 182 m2
- Year of Construction: TBC
- Views: Countryside
- Airport: 20 Minutes
- Beach: 20 Minutes
- Shopping: 15 Minutes
- Swimming Pool Size: 10m x 5m
- Energy Rating: C
- Price: €845,000

