



C7

C8

C9

C10

C11

C12

C1

C2

C3

C4

C5

C6





# Alcedo Villas

## Unit C6 | V5

### UPPER LEVEL

( all areas shown in this page are usable )

Kitchen — 30,2 m<sup>2</sup>

Dining Room — 25 m<sup>2</sup>

WC — 3 m<sup>2</sup>

Living Room — 47,7 m<sup>2</sup>

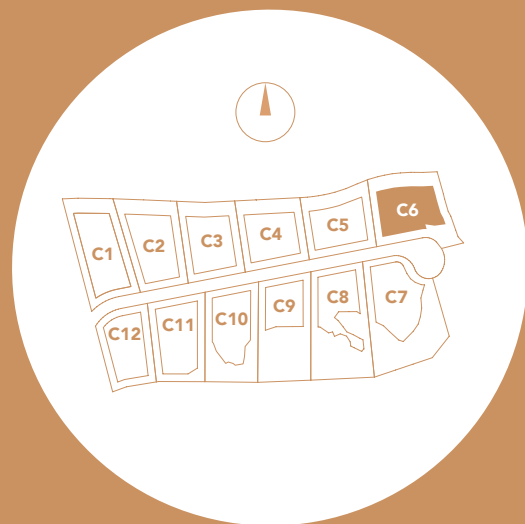
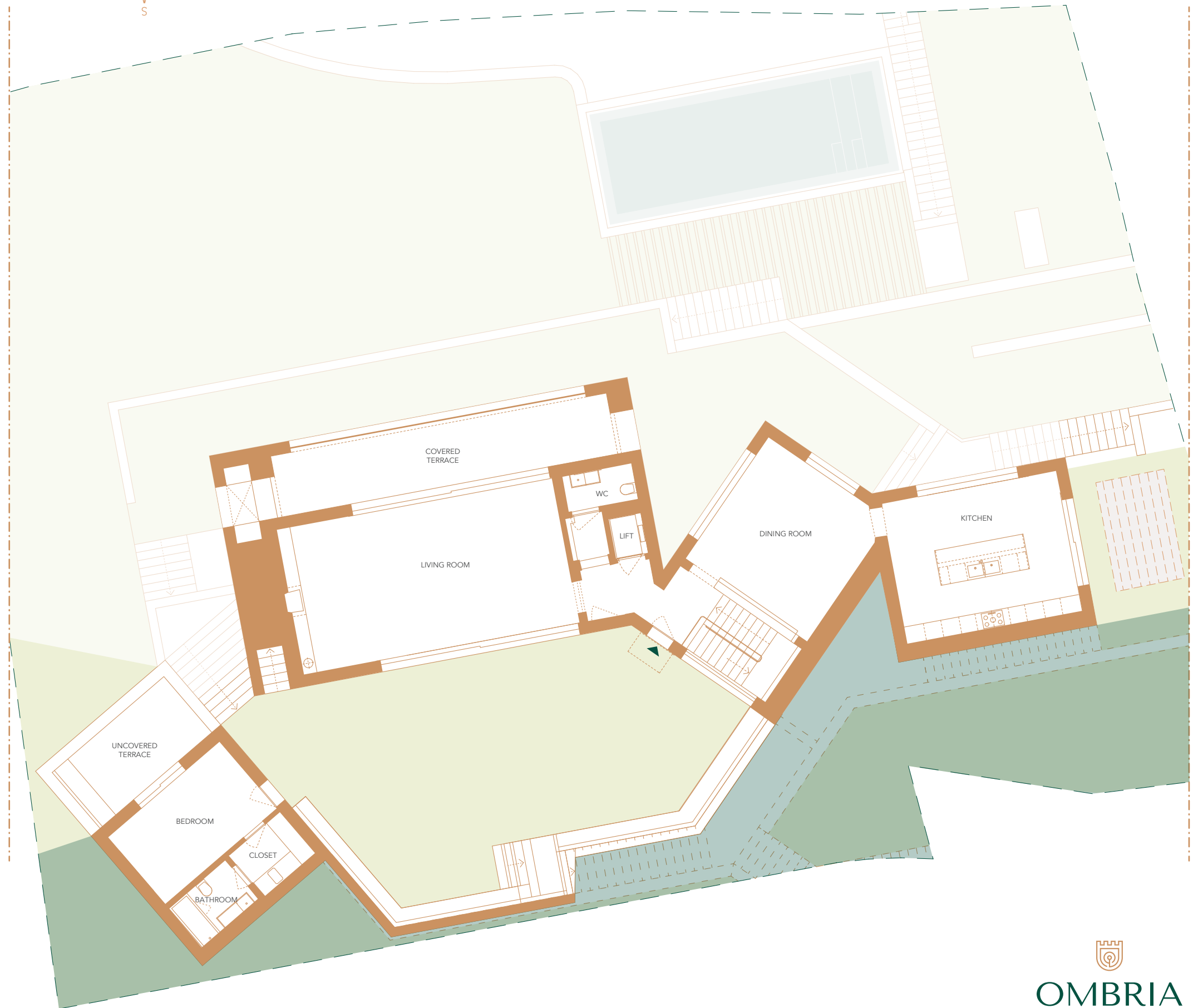
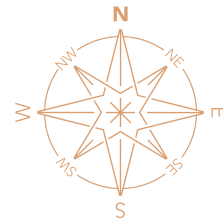
Covered Terrace — 28,8 m<sup>2</sup>

Uncovered Terrace — 12,5 m<sup>2</sup>

Bedroom — 15 m<sup>2</sup>

Bathroom — 4,3 m<sup>2</sup>

Closet — 4,4 m<sup>2</sup>





# Alcedo Villas

## Unit C6 | V5

### LOWER LEVEL

( all areas shown in this page are usable )

A  
Bedroom — 18,2 m<sup>2</sup>  
Bathroom — 16,7 m<sup>2</sup>  
Closet — 6,5 m<sup>2</sup>

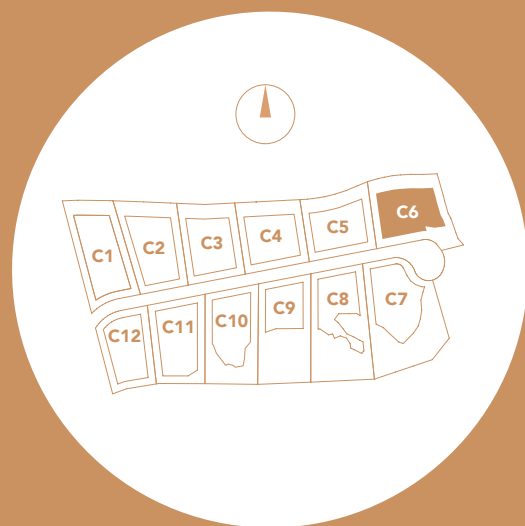
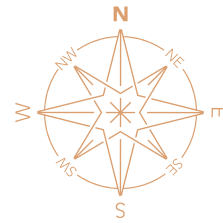
B  
Bedroom — 13 m<sup>2</sup>  
Bathroom — 3 m<sup>2</sup>

Corridor — 10,4 m<sup>2</sup>

C  
Bedroom — 14 m<sup>2</sup>  
Bathroom — 3 m<sup>2</sup>

D  
Bedroom — 15 m<sup>2</sup>  
Bathroom — 5,7 m<sup>2</sup>

Technical Area — 14,8 m<sup>2</sup>  
Laundry Room — 6,5 m<sup>2</sup>  
WC — 3,2 m<sup>2</sup>





# Alcedo Villas

## Unit C6 | V5

### BASEMENT

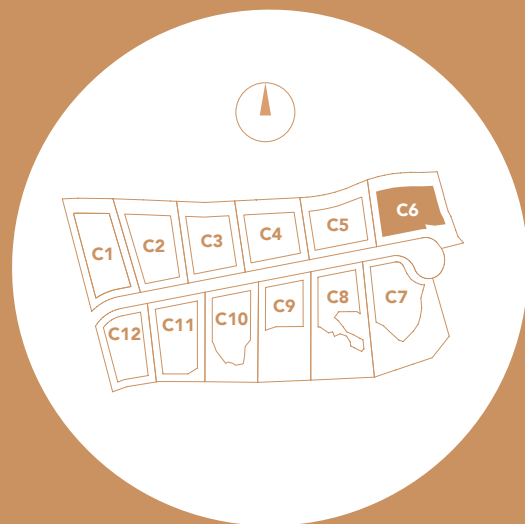
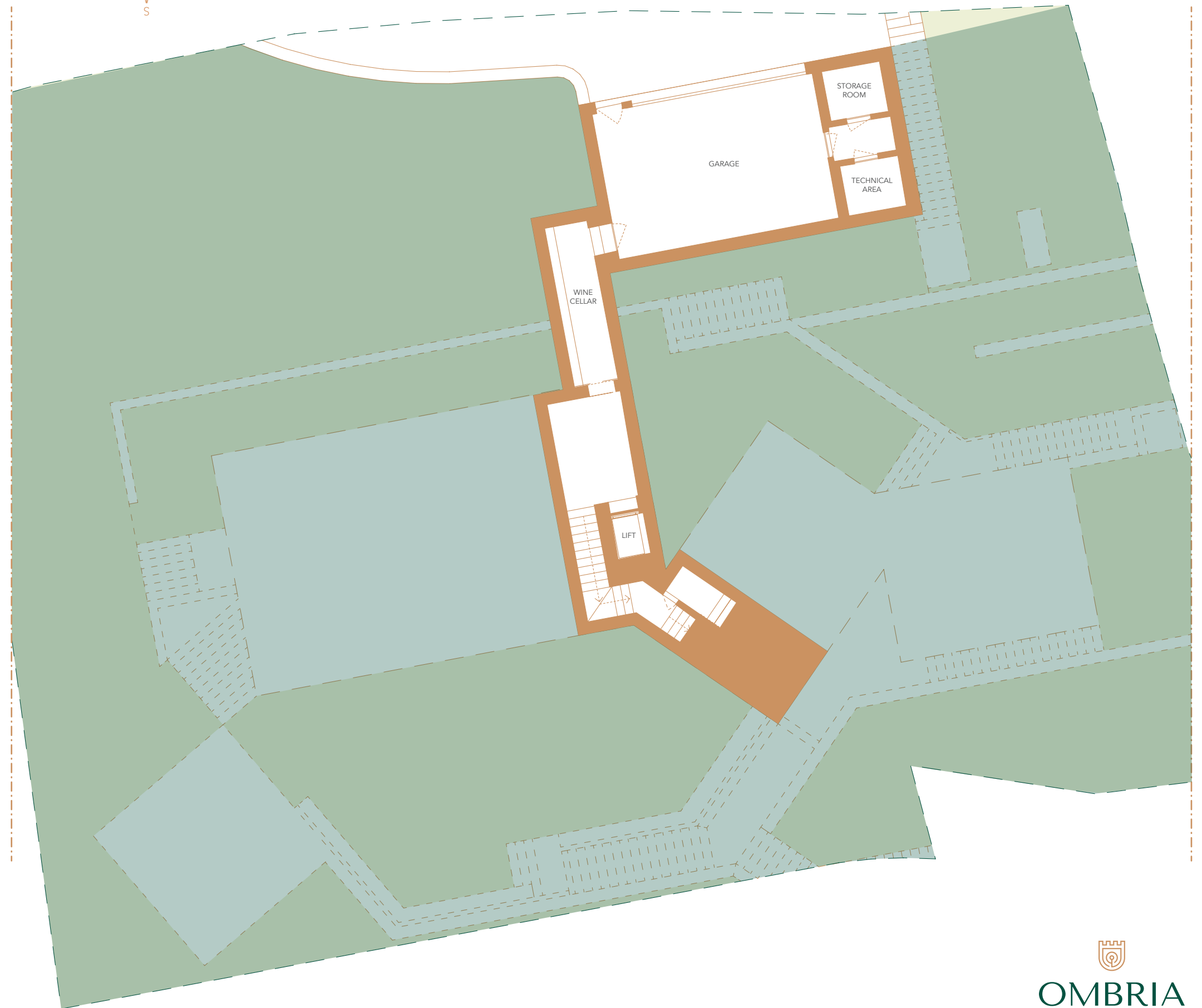
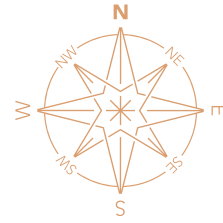
( all areas shown in this page are usable )

Garage — 38,3 m<sup>2</sup>

Wine Cellar — 8,2 m<sup>2</sup>

Technical Area — 3,7 m<sup>2</sup>

Storage Room — 3,7 m<sup>2</sup>





# Alcedo Villas

## Unit C6 | V5

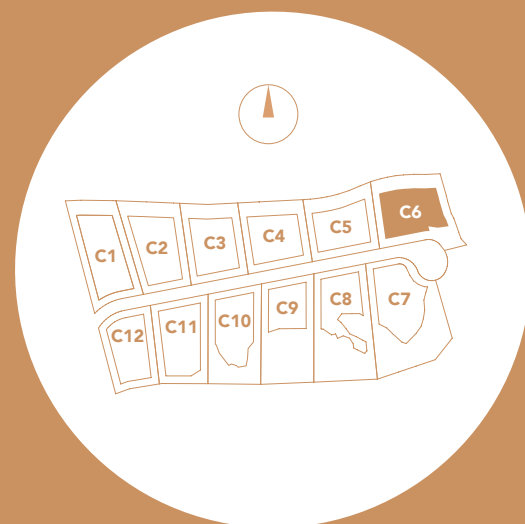
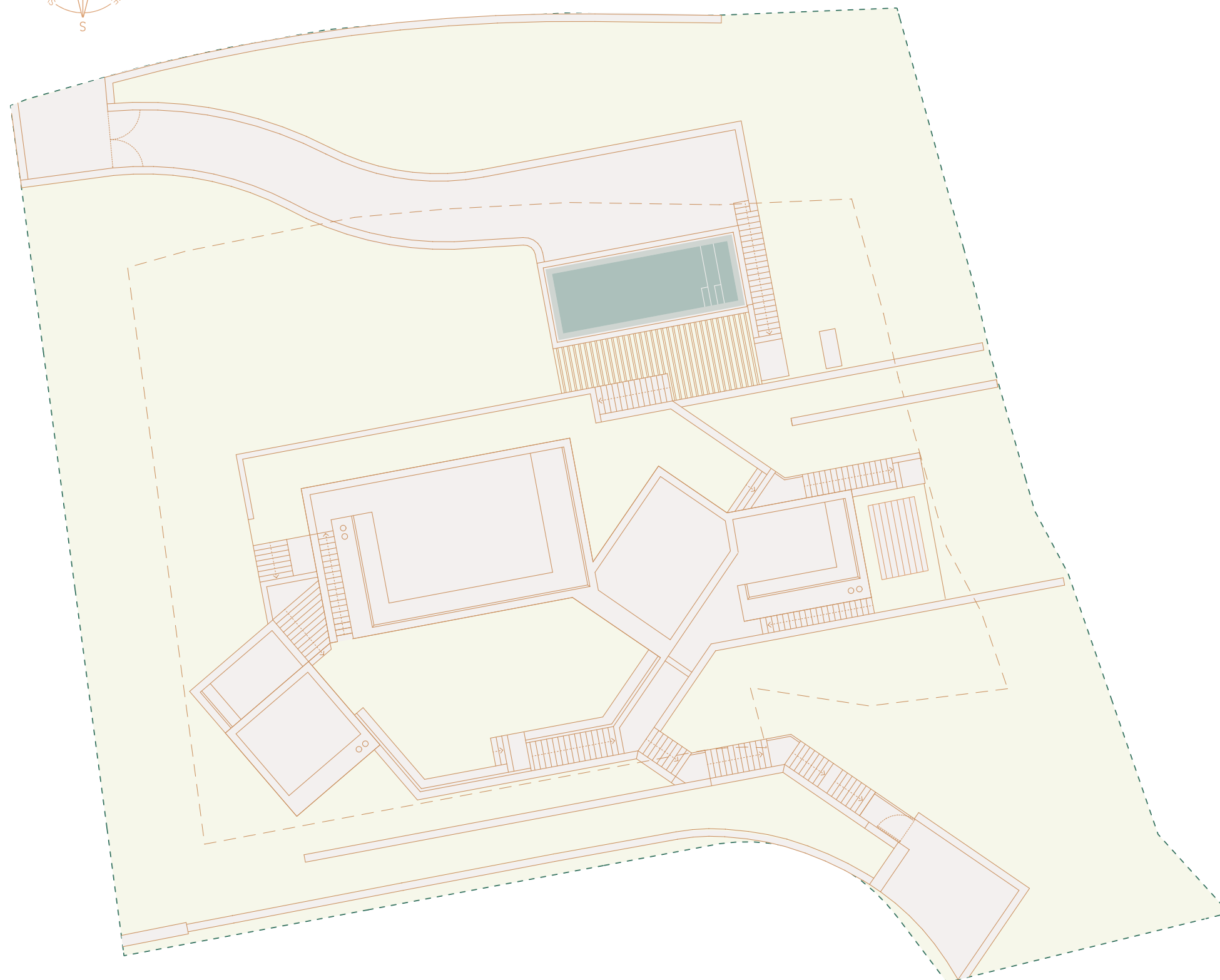
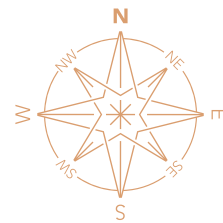
PLOT AREA — 2387 m<sup>2</sup>

( all areas shown in this page are gross )

1. Int. Gross Const. Area — 413,6 m<sup>2</sup>
  - a. Upper Level — 193,6 m<sup>2</sup>
  - b. Lower Level — 164 m<sup>2</sup>
  - c. Basement — 56,2 m<sup>2</sup>
2. Covered Terraces — 35 m<sup>2</sup>
3. Uncovered Terraces — 12,5 m<sup>2</sup>
4. Rooftop Terraces — 126 m<sup>2</sup>
5. Technical Areas — 63 m<sup>2</sup>
  - a. Lower Level — 46 m<sup>2</sup>
  - b. Basement — 17 m<sup>2</sup>
6. Garage — 62,6 m<sup>2</sup>
7. Pool — 10 m x 4 m

— Int. Gross Const. Area  
+ Technical Areas  
+ Garage (1+5+6) | 539,5 m<sup>2</sup>

— Total Area (1+2+3+4+5+6) — 713 m<sup>2</sup>





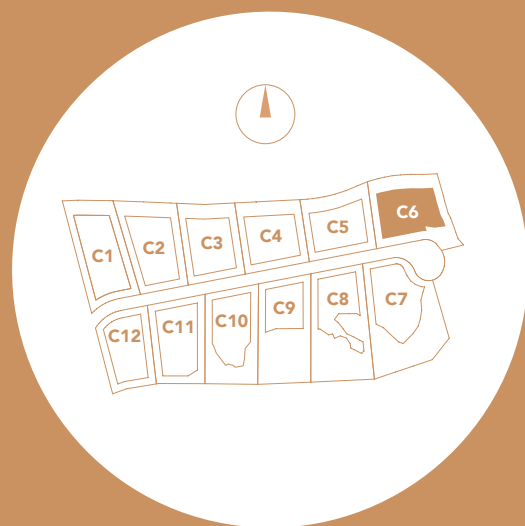
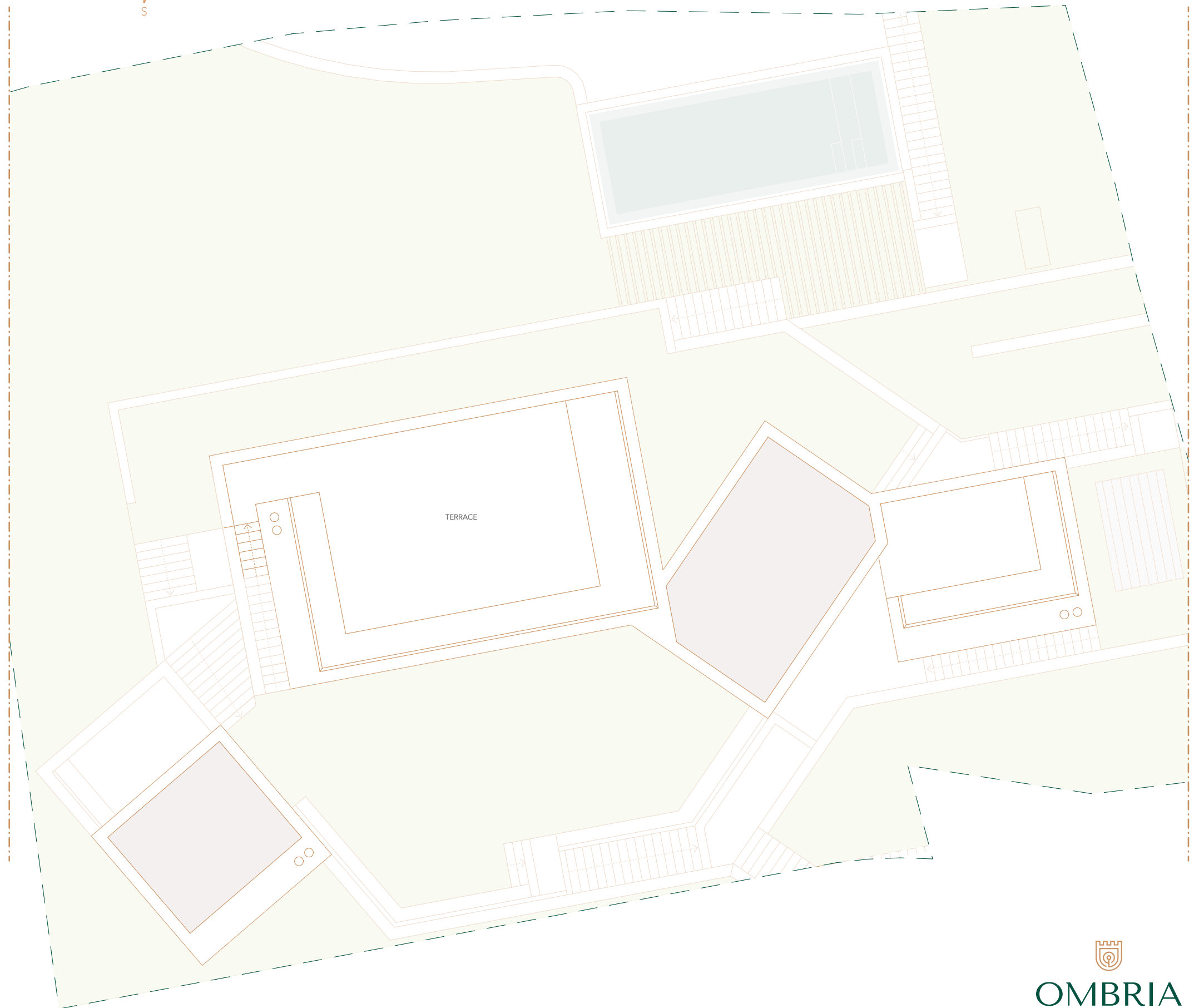
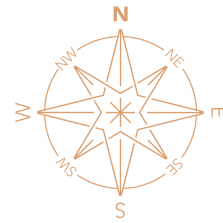
# Alcedo Villas

## Unit C6 | V5

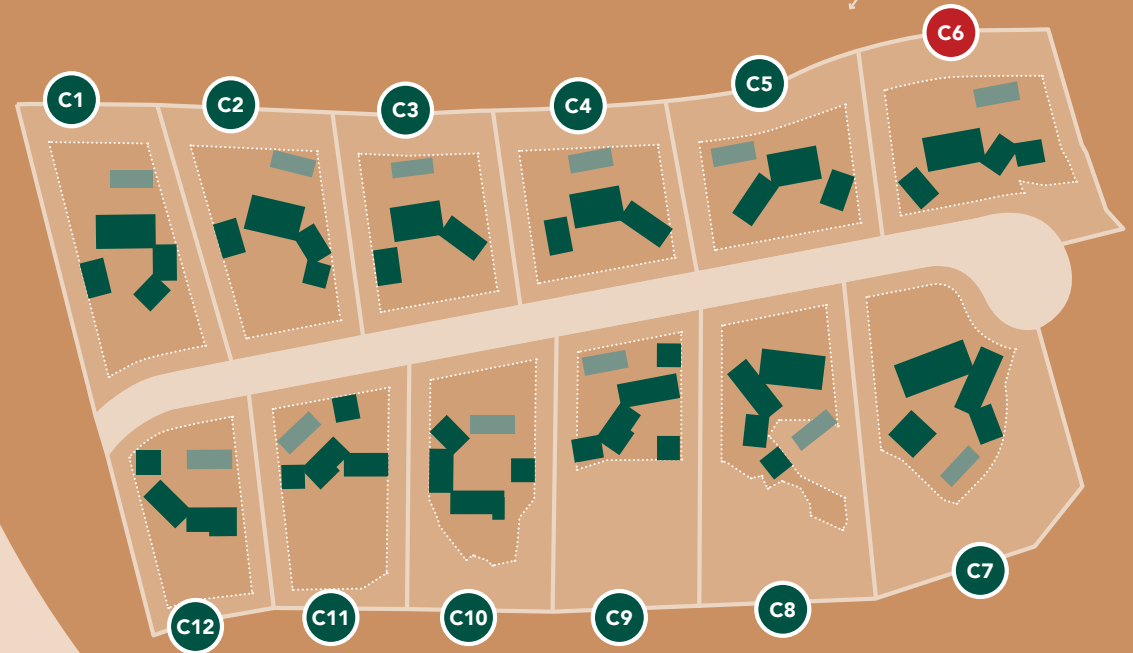
ROOFTOP

( all areas shown in this page are usable )

Terrace — 91,2 m<sup>2</sup>



# Alcedo Villas Masterplan



UNIT	PLOT AREA M <sup>2</sup>	NUMBER OF BEDROOMS	TYPE <sup>1)</sup>	INT. GROSS CONST. AREA + TECH. AREAS + GARAGE <sup>2)</sup>	INT. GROSS CONST. AREA + TECH. AREAS + GARAGE + CO., UNCO. AND ROOFTOP TERRACES <sup>3)</sup>
C01	2368	5	L	505,65	646,97
C02	2232	4	L	477,34	602,39
C03	1994	4	L	432,55	553,48
C04	1975	4	L	432,55	553,48
C05	1949	4	L	425,18	546,11
C06	2387	5	L	539,49	712,99
C07	3324	7	L	569,10	746,80
C08	2921	5	L	537,07	678,60
C09	2477	5	U	494,91	589,39
C10	2270	4	U	504,72	576,78
C11	2017	4	U	436,74	536,22
C12	1735	3	U	387,13	481,02

<sup>1)</sup> Type L: Bedrooms in the lower level; Type U: Bedrooms in the upper level

<sup>2)</sup> Internal Gross Construction Area + Technical Areas + Garage

<sup>3)</sup> Internal Gross Construction Area + Technical Areas + Garage + Covered, Uncovered and Rooftop Terraces





## Masterplan

**1** VICEROY at OMBRIA RESORT  
— 5 Star Hotel  
— Viceroy Residences

**2** **ALCEDO VILLAS**  
— Private Villas

**3** ORIOLE VILLAGE  
— Apartments  
/ Townhouses / Villas

**4** FUTURE DEVELOPMENT

**5** FUTURE DEVELOPMENT (VILLAS)

CLUBHOUSE

CONFERENCE CENTER

ASTRONOMICAL OBSERVATORY

PRAÇA

RESTAURANTS

FITNESS

CYCLING LANE

NATURE PATH

JOGGING PATH

18 HOLE GOLF COURSE

SPA

JUNIOR CLUB

ORGANIC VEGETABLE GARDEN







C6

C5

C4

C3

C2

C1

C7

C8

C9

C10

C11

C12